

GRUPO HF



CATÁLOGO DE REMATE MAYO 2024

RE-N
RETEN EURO VENT NYLON



BL12, BL16
BISAGRA "L" DE 12 Y 16 MM
LATONADA



DLA-01
DEDAL DE LAMINA NEGRA
¾ LATONADO



DB015-150 y 200MM
PASADOR NIQUELADO S. 150 y 200 MM



| Acabado | Existencia | Precio |
|---------|------------|--------|
| Blanco | 10,190 | \$0.16 |
| Gris | 8,990 | \$0.16 |
| Negro | 17,700 | \$0.16 |

| Medida | Existencia | Precio |
|--------|------------|--------|
| 12-MM | 300 | \$2.96 |
| 16-MM | 377 | \$3.22 |

| Acabado | Existencia | Precio |
|---------|------------|--------|
| Latón | 451 | \$0.43 |

| Medida | Existencia | Precio |
|--------|------------|----------|
| 150-MM | 9 | \$138.06 |
| 200-MM | 9 | \$177.87 |

NUM-# A INOX-13
NUMERO 13 CM ACERO INOX



| Numero | Existencia | Precio |
|--------|------------|---------|
| 1 | 13 | \$72.48 |
| 4 | 5 | \$72.48 |
| 6 | 8 | \$72.48 |

NUM-# A INOX
NUMERO 15 CM ACERO INOX.



| Numero | Existencia | Precio |
|--------|------------|---------|
| 0 | 12 | \$72.48 |
| 2 | 1 | \$72.48 |
| 3 | 7 | \$72.48 |
| 4 | 12 | \$72.48 |
| 5 | 10 | \$72.48 |
| 6 | 5 | \$72.48 |
| 7 | 14 | \$72.48 |
| 8 | 12 | \$72.48 |

NUM15-#
NUMERO DE LATON DE 15 CM.



| Numero | Existencia | Precio |
|--------|------------|---------|
| 0 | 36 | \$30.25 |
| 4 | 41 | \$30.25 |
| 6 | 5 | \$30.25 |
| 7 | 44 | \$30.25 |
| 8 | 23 | \$30.25 |

L15-D
LETRA "D" DE LATON DE 15 CM.



| Letra | Existencia | Precio |
|-------|------------|---------|
| D | 85 | \$25.80 |

L-B"-C" INOX
LETRA DE ACERO INOXIDABLE 15 CM



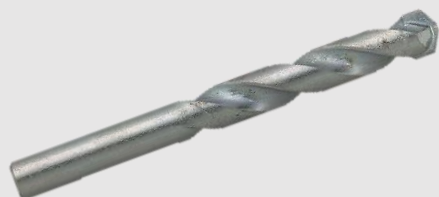
| Letra | Existencia | Precio |
|-------|------------|---------|
| B | 1 | \$72.48 |
| C | 1 | \$72.48 |

CT
CARRETILLA TORTUGA



| Acabado | Existencia | Precio |
|---------|------------|--------|
| Galv. | 1,017 | \$0.92 |

003-346
BROCA PARA CONCRETO 3/4 X 6
ZANCO 5/8



| Acabado | Existencia | Precio |
|---------|------------|---------|
| Galv. | 20 | \$30.21 |

1212160
JALADERA RECTA 22CM
ACERO INOX.



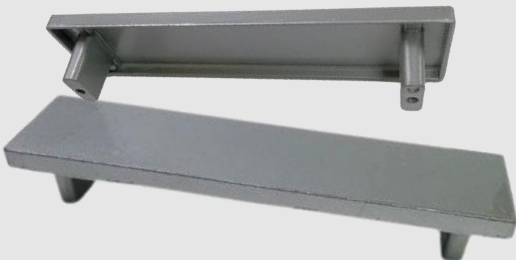
| Acabado | Existencia | Precio |
|---------|------------|---------|
| Inox | 44 | \$53.24 |

1623, 1624, 1625
JALADERA ESFERICA
ACERO INOX.



| Medidas | Existencia | Precio |
|---------|------------|---------|
| 30 x 35 | 6 | \$46.53 |
| 20 x 26 | 8 | \$25.83 |
| 25 x 32 | 6 | \$39.80 |

7599
JALADERA RECTANGULO



| Acabado | Existencia | Precio |
|---------|------------|---------|
| Galv. | 277 | \$10.12 |

7623
JALADERA MOÑO



| Acabado | Existencia | Precio |
|---------|------------|--------|
| Galv. | 123 | \$7.62 |

91-O
JALADERA TUB. TRENZADA
ALUMINIO ORO



| Acabado | Existencia | Precio |
|---------|------------|---------|
| Oro | 30 | \$14.52 |

ADO-ESP
ADORNO ESPIGA



| Acabado | Existencia | Precio |
|---------|------------|--------|
| Cobre | 90 | \$2.96 |
| Latón | 90 | \$2.96 |
| Nogal | 110 | \$2.96 |

CAP-EGI
CAPITEL EGIPCIO



| Acabado | Existencia | Precio |
|---------|------------|--------|
| Cobre | 90 | \$3.38 |
| Latón | 90 | \$3.38 |
| Nogal | 90 | \$3.38 |

CHA-FLO
CHAPETON FLOR



| Acabado | Existencia | Precio |
|---------|------------|--------|
| Cobre | 50 | \$2.62 |
| Latón | 50 | \$2.62 |
| Nogal | 100 | \$2.45 |

JAL-CAP
JALADERA CAPITEL



| Acabado | Existencia | Precio |
|---------|------------|--------|
| Cobre | 130 | \$5.07 |
| Latón | 40 | \$5.19 |
| Nogal | 38 | \$5.19 |

JAL-DIN
JALADERA DINAMARCA



| Acabado | Existencia | Precio |
|---------|------------|--------|
| Cobre | 19 | \$4.66 |
| Latón | 79 | \$2.96 |
| Nogal | 51 | \$4.23 |

JAL-FLO
JALADERA FLOR



| Acabado | Existencia | Precio |
|---------|------------|--------|
| Cobre | 100 | \$2.87 |
| Latón | 89 | \$2.87 |
| Nogal | 95 | \$2.87 |

JAL-MIL
JALADERA MILAN



| Acabado | Existencia | Precio |
|---------|------------|--------|
| Cobre | 99 | \$3.30 |
| Latón | 80 | \$3.30 |
| Nogal | 60 | \$3.30 |

JAL-ATE-L
JALADERA ATENAS LATON



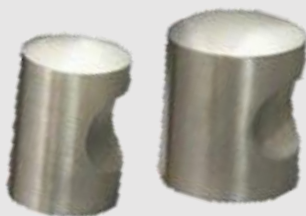
| Acabado | Existencia | Precio |
|---------|------------|--------|
| Latón. | 39 | \$3.19 |

JAL-LIS-L
JALADERA LISBOA LATON



| Acabado | Existencia | Precio |
|---------|------------|--------|
| Latón. | 79 | \$3.55 |

JAL-B-INOX 02
JALADERA BARRILITO INOX
20 X 28 CM



| Acabado | Existencia | Precio |
|---------|------------|---------|
| Inox | 215 | \$12.70 |

32-U
RODAJA TIPO YOYO C/PLACA
DOBLADA EN U DE 1 1/2"



| Acabado | Existencia | Precio |
|---------|------------|--------|
| Negro | 258 | \$3.47 |

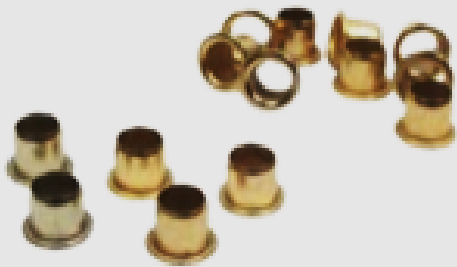
MBB
 MANIJA TUBULAR BAÑO
 HAMBURGO y BREMEN EN ZAMAK



MBH
 MANIJA TUBULAR BAÑO
 HAMBURGO EN ZAMAK



3390
 OJILLO PARA MENSULA LAT BRI



105-CR
 PASASOR CADENA
 LATON CROMADO



| Acabado | Existencia | Precio |
|---------------|------------|---------|
| Cromo antiguo | 45 | \$92.32 |
| Latón Antiguo | 30 | \$93.17 |
| Níquel Satín | 12 | \$94.86 |

| Acabado | Existencia | Precio |
|--------------|------------|---------|
| Cromo Mate | 22 | \$97.40 |
| Latón Dorado | 27 | \$97.40 |
| Níquel Satín | 7 | \$93.17 |

| Acabado | Existencia | Precio |
|---------|------------|--------|
| Latón | 493 | \$0.25 |

| Acabado | Existencia | Precio |
|---------|------------|---------|
| Cromo | 24 | \$76.14 |

PDC-3 1/4
PASADOR DE CADENA 3 1/4"
NIQUEL-SATINADO



| Acabado | Existencia | Precio |
|--------------|------------|---------|
| Níquel Satín | 22 | \$51.47 |

TCH / TGDE
TOPE DE PISO CHICO Y
GRANDE
EN ZAMAK



| Acabado | Existencia | Precio |
|--------------|------------|---------|
| Latón Dorado | 106 | \$15.67 |
| Latón Dorado | 90 | \$16.77 |

8701
BUZON ACERO INOXIDABLE



| Acabado | Existencia | Precio |
|---------|------------|----------|
| Inox | 1 | \$340.00 |

TP-LD
 TOPE DE PARED EN ZAMAK
 LATON DORADO



| Acabado | Existencia | Precio |
|---------|------------|---------|
| Dorado | 99 | \$12.28 |

03-018
 CERRADURA BELAGGIO ENT.
 PRINCIPAL GRIS DORADO B



| Acabado | Existencia | Precio |
|-------------|------------|----------|
| Gris Dorado | 1 | \$856.30 |

03-112
 CERRADURA PALAZZIO
 RECAMARA DORADO



| Acabado | Existencia | Precio |
|---------|------------|----------|
| Dorado | 2 | \$312.78 |

02-013 / 02-014

- GEORGIA A40S BAÑO DORADO
- GEORGIA A50WS RECAMARA DORADO



02-411

INTERCONEXION H380 PRINC.
CRO/MATE



TBA-120

TUBO BLANCO DE 1" x 1.2 MTS. KIT
CON ACCESORIOS S/TORNILLOS



TBAO-1.20

TUBO OVALADO PINTADO
DE 15 x 30 MM. EN 1.20 MTS.



| Acabado | Existencia | Precio |
|---------------|------------|---------|
| Baño Dorado | 27 | \$75.29 |
| Recam. Dorado | 22 | \$78.68 |

| Acabado | Existencia | Precio |
|------------|------------|----------|
| Cromo Mate | 5 | \$377.75 |

| Acabado | Existencia | Precio |
|---------|------------|---------|
| Blanco | 15 | \$20.06 |

| Acabado | Existencia | Precio |
|---------|------------|---------|
| Blanco | 1 | \$21.00 |

01-060

CONTRA ELECTRICA PARA
CERRADURA DERECHA



| Acabado | Existencia | Precio |
|---------|------------|----------|
| Gris | 14 | \$100.70 |

01-061

CONTRA ELECTRICA PARA
CERRADURA IZQUIERDA



| Acabado | Existencia | Precio |
|---------|------------|----------|
| Gris | 14 | \$104.16 |

02-412

INTERCONEXION H380 PRIN
DOR/BR



| Acabado | Existencia | Precio |
|------------------|------------|----------|
| Dorado Brillante | 5 | \$316.68 |

02-040

- BELLWOOD A40S BAÑO DORADO
- BELLWOOD A50WS RECAMARA DORADO
- CERRAD. BELLWOOD A80PD PRINCIPAL PLATINUM



| Acabado | Existencia | Precio |
|-------------|------------|---------|
| Baño Dorado | 34 | \$74.45 |

02-410

INTERCONEXION H380 PRINC.
DOR/MATE



| Acabado | Existencia | Precio |
|-------------|------------|----------|
| Dorado Mate | 6 | \$325.15 |

02-324

CERR. BASSIANO A40S BAÑO
CROMO MATE



| Acabado | Existencia | Precio |
|------------|------------|----------|
| Cromo Mate | 14 | \$123.55 |

03-017

CERRADURA BELAGGIO BAÑO
DORADO BRILLANTE GRIS



| Acabado | Existencia | Precio |
|------------------|------------|----------|
| Dorado Brillante | 2 | \$291.35 |

2-L

JALADERA DE LATON



| Acabado | Existencia | Precio |
|---------|------------|--------|
| Latón | 1 | \$8.03 |

1-L-B

JALADERA DE LATON EN BLISTER



| Acabado | Existencia | Precio |
|---------|------------|--------|
| Latón | 4 | \$1.11 |

60-R

CARRETILLA DOBLE VISTA
RODAMIENTO 3/4



| Acabado | Existencia | Precio |
|---------|------------|--------|
| Galv. | 106 | \$4.65 |

8-ZG

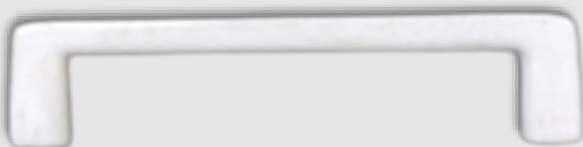
JALADERA PARA CAJON PLANA 8-ZG



| Acabado | Existencia | Precio |
|---------|------------|--------|
| Gris | 123 | \$3.11 |

8-ZB

JALADERA PARA CAJON PLANA 8-ZB



| Acabado | Existencia | Precio |
|---------|------------|--------|
| Blanco | 222 | \$2.49 |

MEN-3-N,

MEN-6-N

MENSULA 15 Y 30 CM

PINTURA EPOXICA NEGRO



| Acabado | Existencia | Precio |
|----------------|------------|--------|
| 15 cm Negro | 94 | \$5.15 |
| 30 cm Negro | 6 | \$8.01 |

MEN-2-B,
MEN-1-N
MEN-2-N
MENSULA 12.5 Y 10 CM PINTURA
EPOXICA BLANCO Y NEGRO



461-E 30
461-N 30
461-O 30
JUEGOS DE MENSULA 30 CMS NEGRO,
NATURAL Y ORO (juego de 2 pzas)



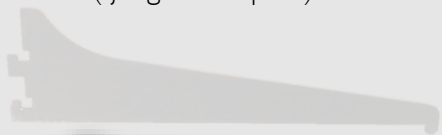
461-E 25
461-N 25
JUEGOS DE MENSULA 25 CMS
NEGRO y NATURAL (juego de 2 pzas)



461-B 20
461-E 20
JUEGOS DE MENSULA 20 CMS
BLANCA y NEGRA (juego de 2 pzas)



461-B 15
JUEGOS DE MENSULA 15 CMS
BLANCA (juego de 2 pzas)



| Acabado | Existencia | Precio |
|----------------------------|------------|--------|
| 12.5 cm Blanco | 71 | \$3.38 |
| 10 cm Pint. Epoxy negra | 172 | \$3.05 |
| 12.5 cm Epoxy negra | 188 | \$3.51 |

| Acabado | Existencia | Precio |
|---------|------------|---------|
| Negro | 91 | \$17.22 |
| Natural | 456 | \$17.22 |
| Oro | 45 | \$17.22 |

| Acabado | Existencia | Precio |
|---------|------------|---------|
| Negro | 13 | \$14.70 |
| Natural | 394 | \$14.70 |

| Acabado | Existencia | Precio |
|---------|------------|---------|
| Blanco | 41 | \$12.60 |
| Negro | 49 | \$12.60 |

| Acabado | Existencia | Precio |
|---------|------------|--------|
| Blanco | 35 | \$9.66 |

OPERADOR 1
OPERADOR PARA VENTANA
EN CROMO SATIN



| Acabado | Existencia | Precio |
|---------|------------|---------|
| Cromo | 139 | \$90.00 |

OPERADOR 2
OPERADOR PARA VENTANA
EN ORO VIEJO



| Acabado | Existencia | Precio |
|-----------|------------|---------|
| Oro viejo | 58 | \$90.00 |

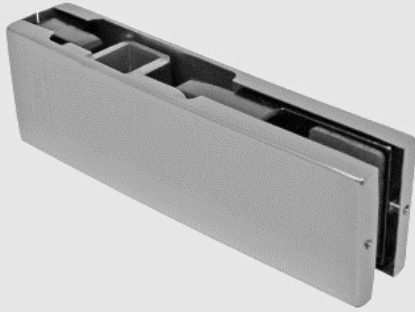
6023-0060-09
PISTON NEUMATICO 60 N



| Acabado | Existencia | Precio |
|---------|------------|---------|
| Galv. | 50 | \$21.60 |

4049-0001-90

HERRAJE INFERIOR
ACOPLAMEN PUERTA-INOX



| Acabado | Existencia | Precio |
|---------|------------|---------|
| Inox | 1 | \$91.47 |

4049-0002-90

HERRAJE SUPERIOR ACOPL.
PUERTA-MACHO-INOX



| Acabado | Existencia | Precio |
|---------|------------|---------|
| Inox | 1 | \$91.47 |

4049-0003-90

HERRAJE SUPERIOR SIMPLE
CRISTAL MACHO-INOX



| Acabado | Existencia | Precio |
|---------|------------|---------|
| Inox | 1 | \$91.47 |

4049-0004-90

HERRAJE SUPERIOR DOBLE
CRISTAL MACHO-INOX



| Acabado | Existencia | Precio |
|---------|------------|----------|
| Inox | 1 | \$216.66 |

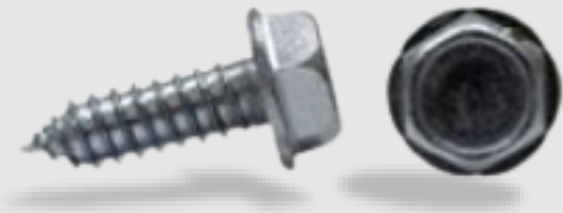
PPLCH-14X2"1/2

PPLCH-1/4 X 4"

PPLCH-5/16X1

PIJA PARA LAMINA CABEZA

HEXAGONAL



PTBPPBG-6X1

PIJA TABLAOCA CAB. PLANA PHIL

PB GALV-6X1



PCFC

PIJA CAB. FIJADORA COMBINADA GALV



| Medidas | Existencia | Precio Millar |
|----------|------------|---------------|
| 14/2"1/2 | 1.300 | \$376.19 |
| 1/4 X 4 | 0.600 | \$674.12 |
| 5/16X1" | 1 | \$442.05 |

| Medidas | Existencia | Precio Millar |
|---------|------------|---------------|
| 6 x 1 | 4.300 | \$40.14 |

| Medidas | Existencia | Precio Millar |
|-------------|------------|---------------|
| 10X1/2 | 2.800 | \$71.57 |
| 10X3/4 | 2.900 | \$73.68 |
| 8X3 | 0.400 | \$193.22 |
| 12 X 1 1/4" | 2.500 | \$135.43 |
| 12 X 1/2 | 6.900 | \$93.17 |
| 12 X 1 | 3.500 | \$131.20 |
| 12X11/2" | 1 | \$172.17 |
| 12X21/2" | 1.900 | \$243.04 |
| 12X3/4 | 10.300 | \$110.02 |
| 14X1"1/2 | 2.100 | \$244.69 |
| 6X1"1/4 | 3.900 | \$70.43 |

PCFPBG

PIJA CAB. FIJADORA PUNTA
BROCA GALVANIZADA



PCFGR

PIJA CAB. FIJADORA
RANURADA GALVANIZADA



PMCFPN

PIJA MADERA CAB. FIJADORA
PHIL-NEGRA



| Medidas | Existencia | Precio Millar |
|------------|------------|---------------|
| 10 X 1 | 3.700 | \$108.92 |
| 10 X 3/4 | 5.400 | \$76.80 |
| 10 X 1 1/2 | 2 | \$151.59 |

| Medidas | Existencia | Precio Millar |
|----------|------------|---------------|
| 12X2 1/2 | 2.900 | \$211.58 |
| 12 X 3 | 2 | \$295.91 |
| 14 X 1/2 | 2.900 | \$134.25 |
| 8X1" | 5 | \$73.60 |
| 8X2" | 2.90 | \$103.15 |
| 8X2"1/2 | 0.500 | \$170.85 |

| Medidas | Existencia | Precio Millar |
|-----------|------------|---------------|
| 10X1" | 0.800 | \$78.50 |
| 10X1"1/2 | 1.800 | \$174.39 |
| 10X1"1/4 | 2.600 | \$91.18 |
| 6 X 1 | 9.100 | \$70.28 |
| 6X1/2 | 9.700 | \$49.69 |
| 8 X 1 1/2 | 3.800 | \$67.66 |
| 8 X 1 1/4 | 6 | \$115.95 |
| 8 X 1/2 | 12.100 | \$74.45 |
| 8X3/4 | 7.600 | \$83.66 |

PMCPPLSA-8X3/4

PIJA MADERA CAB. PLANA PHIL
LAT. SIN ARISTAS 8X3/4



PMPN

PIJA MULTIUSOS PHILLIPS
NEGRA



PMCPPN

PIJA MADERA CAB. PAN PHIL
NEGRA CON ARISTAS



PMCPPNSA

PIJA MADERA CAB. PLANA PHIL
NEGRA SIN ARISTAS



| Medidas | Existencia | Precio Millar |
|---------|------------|---------------|
| 8X3/4 | 1 | \$67.74 |

| Medidas | Existencia | Precio Millar |
|---------|------------|---------------|
| 6X1" | 7 | \$29.00 |

| | | |
|---------|-------|---------|
| 6X1"1/4 | 7.200 | \$37.59 |
|---------|-------|---------|

| Medidas | Existencia | Precio Millar |
|---------|------------|---------------|
| 8X1"5/8 | 3.700 | \$68.18 |

| | | |
|-------|--------|---------|
| 8X3/4 | 16.900 | \$42.23 |
|-------|--------|---------|

| | | |
|---------|-------|----------|
| 8X2"1/2 | 0.500 | \$113.85 |
|---------|-------|----------|

| | | |
|-----|-------|----------|
| 8X3 | 1.600 | \$135.43 |
|-----|-------|----------|

| | | |
|----------|-------|---------|
| 10X1"1/2 | 0.400 | \$99.31 |
|----------|-------|---------|

| | | |
|------|-------|----------|
| 14X3 | 0.200 | \$285.97 |
|------|-------|----------|

| | | |
|-----|-------|---------|
| 6X1 | 0.600 | \$45.58 |
|-----|-------|---------|

| | | |
|---------|-------|---------|
| 6X1"1/2 | 0.300 | \$51.00 |
|---------|-------|---------|

| Medidas | Existencia | Precio Millar |
|---------|------------|---------------|
| 5X1/2 | 15.800 | \$22.85 |

| | | |
|-------|--------|---------|
| 6X5/8 | 12.600 | \$27.96 |
|-------|--------|---------|

| | | |
|-------|----|---------|
| 8X3/4 | 21 | \$55.71 |
|-------|----|---------|

PMPCPN

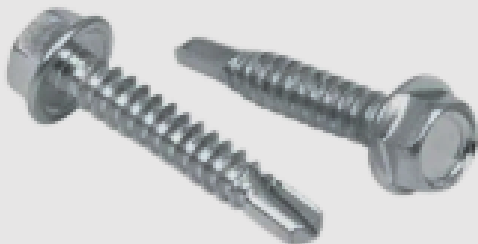
PIJA MADERA CAB. PLANA
COMBINADA NEGRA CON
ARISTAS



| Medidas | Existencia | Precio Millar |
|----------|------------|---------------|
| 10X2 | 0.400 | \$115.95 |
| 10X2"1/2 | 0.200 | \$190.33 |
| 12X2"1/2 | 0.500 | \$203.87 |

PPB

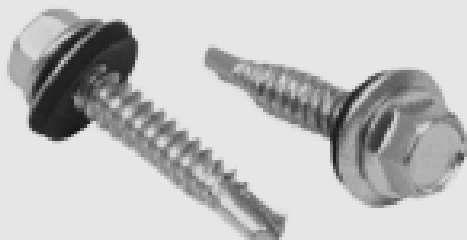
PIJA PUNTA DE BROCA 10 X 1/2
SIN ACCESORIOS



| Medidas | Existencia | Precio Millar |
|-----------|------------|---------------|
| 10 X1 | 11.200 | \$123.57 |
| 10 X1/2 | 9.900 | \$93.17 |
| 10 X3/4 | 5.300 | \$104.01 |
| 12 X 3/4 | 3.400 | \$132.72 |
| 12 X1" | 1.600 | \$160.16 |
| 8 X 1/2 | 5 | \$69.53 |
| 8 X 3/4 | 12.700 | \$70.89 |
| 8X1 1/4 | 2.200 | \$110.86 |
| 14X1 1/4" | 5.800 | \$426.39 |

PPBS

PIJA PUNTA DE BROCA C/ACC
ENSAMBLADA STANDAR



| Medidas | Existencia | Precio Millar |
|---------------|------------|---------------|
| 14 X 2 1/2 | 0.100 | \$479.94 |
| 14 X 3 | 0.700 | \$541.28 |

M18016IG

DISCO CORTE DUO INOX-METAL

7" X 1.6 MM (180x1.6x22.23 mm)



| Acabado | Existencia | Precio |
|------------|------------|--------|
| Gama Verde | 245 | \$9.24 |

M18060MG

DISCO DESBASTE METAL 7" (180X6.0 mm)



| Acabado | Existencia | Precio |
|------------|------------|---------|
| Gama Verde | 490 | \$17.54 |

- M115040A
- M115080A
- M115120A

DISCO LAMINADO DESBASTE METAL GRANO (115 MM)



| Medidas | Existencia | Precio |
|-------------|------------|--------|
| G40 4 1/2" | 112 | \$9.25 |
| 80 4 1/2" | 510 | \$9.25 |
| G120 4 1/2" | 202 | \$9.25 |

3470 CANDADO CHICO



2621 CANDADO OXIDO RESISTENTE GANCHO LARGO



3009-0001-70 CANDADO DE LATON S 20 MM.)



2400 CANDADO CHICO EN CAJA (CROMO SATIN) (NEGRO)



CERR-PRESTO CERRADURA SEGURO)



| Acabado | Existencia | Precio |
|-------------|------------|---------|
| Galvanizado | 81 | \$41.30 |

| Acabado | Existencia | Precio |
|-------------|------------|---------|
| Galvanizado | 2 | \$77.00 |

| Acabado | Existencia | Precio |
|----------|------------|---------|
| Latonado | 3 | \$75.00 |

| Acabado | Existencia | Precio |
|-------------|------------|---------|
| Cromo Satín | 9 | \$48.30 |
| Negro | 36 | \$48.30 |

| Producto | Existencia | Precio |
|-----------|------------|---------|
| Cerradura | 12 | \$90.00 |

GRUPO HF



Condiciones de venta

- No se aceptan devoluciones
- Producto sin resurtido
- Hasta agotar existencias
- Precios + I.V.A